

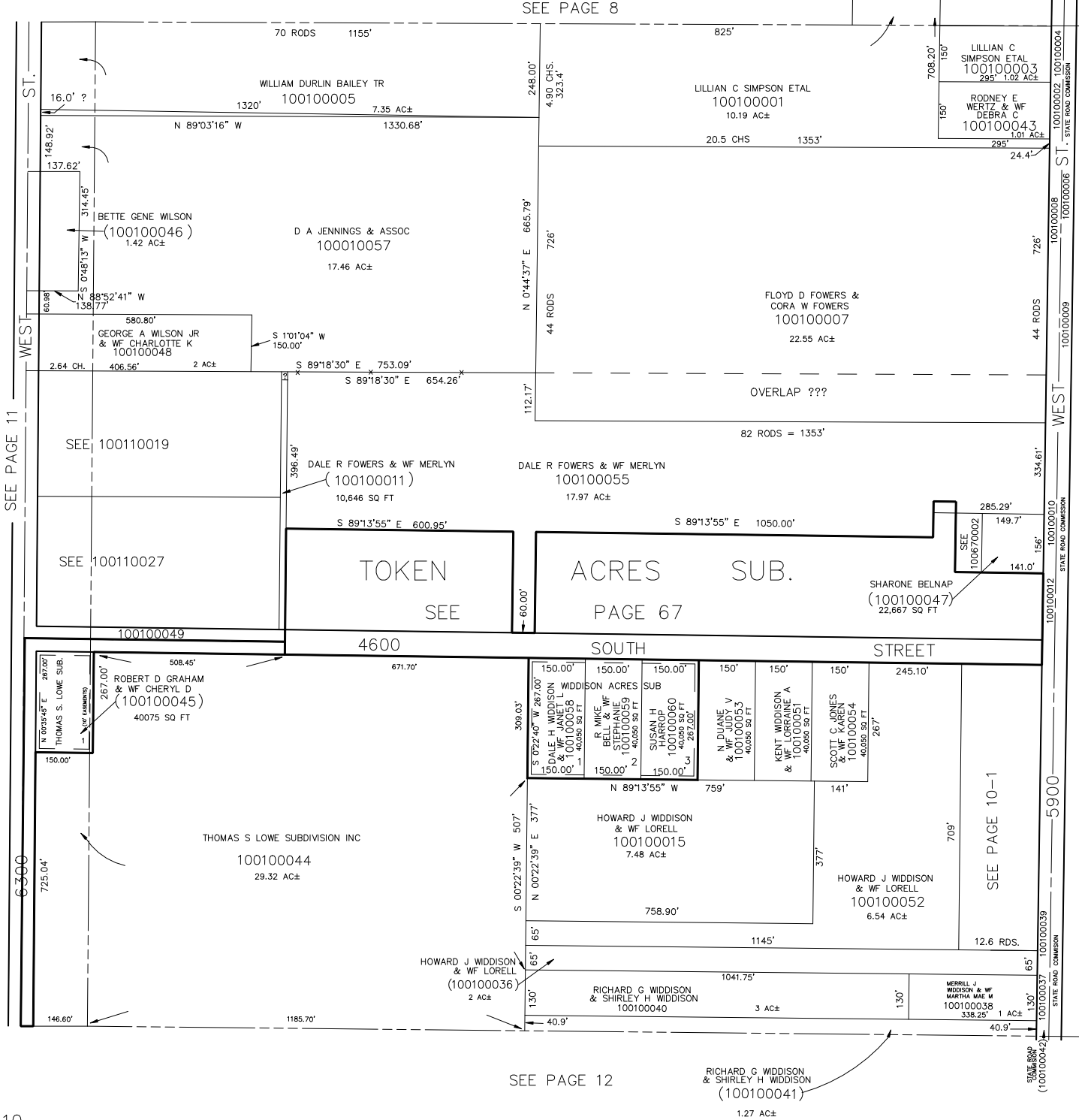
SE 1/4
SECTION 12, T.5N., R.3W., S.L.B. & M.

IN WEBER COUNTY

SCALE 1" = 200'

TAXING UNIT: 31

SEE PAGE 8



SEE PAGE 12

RICHARD G. WIDDISON
& SHIRLEY H. WIDDISON
(100100041)
1.27 AC±

SEE BOOK 8, PAGE 46